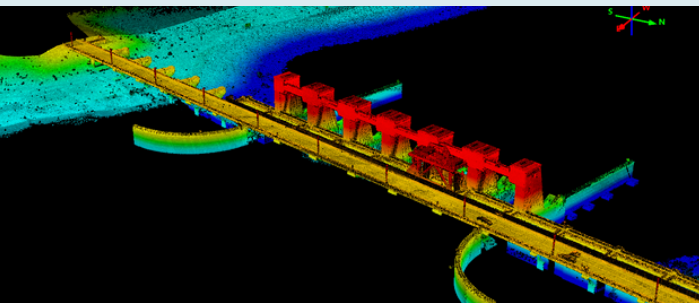


## LEADING THE FIELD.

Unmanned Aerial Systems (UAS) and LiDAR (3-D Laser Scan) technology is the future of the industry and Chustz Surveying is at the forefront with all of the latest tools. We use both rotary and fixed-wing UAS equipped with LiDAR and a range of other sensors to meet our client needs. Our deliverables include orthomosaics, multi-spectral imagery, Digital Surface Models (DSMs), densified point clouds, Ultra-High Definition video and still imagery, and other specialty types in industry-standard formats to meet almost any client need. Unmanned Aerial Systems present numerous advantages over traditional data acquisition methods, including faster deployment of acquisition resources, real-time monitoring, and the ability to quickly survey difficult terrain. Using these new technologies in lieu of conventional surveying methods have yielded a cost savings to our clients of more than 20%.



## OUR SERVICES

- ▶ Aerial LiDAR
- ▶ Aerial Imagery
- ▶ Multispectral
- ▶ Photogrammetry
- ▶ UHD Video
- ▶ Volumetric Data
- ▶ Data Processing
- ▶ Data Analysis



## ABOUT US

GISEng has been dedicated to providing high-quality, responsive professional services that clients need to achieve success. GISEng has grown to nearly 200 employees in just six years of business; this market emergence demonstrates the company's ability to provide trusted services with enthusiasm, diligence, and creativity. GISEng is a multi-discipline engineering, surveying and construction management firm providing services to customer in the Energy, Industrial, Power and Public Works sectors. GISEng is a subsidiary of GIS Holdings, LLC which was established in 1948. With 20+ strategically located facilities, 3,000+ employees, and 20+ service lines GIS is capable of offering full-service design, fabrication and construction services to clients as a single point of contact.

For more information on our company, you can visit [www.gisy.com](http://www.gisy.com)

## SAFETY

**LIFE** is the proactive, operational, and behavior-based component of GIS's comprehensive safety management program. While our Corporate HSE group focuses on compliance, training, and incident response, the LIFE processes specifically cover Operational Safety, through: comprehensive work planning; increasing awareness of work area & task risks; intervention techniques for redirecting at-risk behaviors; embedded field presence; quarterly initiatives focused on observed areas of risk; and visible leadership engagement all while encompassing the Human Performance Improvement Principles.

## PEOPLE

GIS employees are at the heart of our business. We are committed to developing and sustaining long-standing relationships with both our internal and external clients. Each employee is committed to excellence and continuous improvement. We understand the personal component of our business and are built upon core values that drive a partnership-minded approach to providing valued solutions to our clients while understanding our clients' operations, goals, and bottom line drivers. Our people believe greater value is created by aligning our goals with those of our clients and striving for innovation and excellence with every opportunity.



# PUTTING PEOPLE FIRST

## SINCE 1948

---

### CORPORATE HEADQUARTERS

18838 HWY 3235 | GALLIANO, LA 70354

### CONTACT INFORMATION

**Jimmy Chustz | VP of Survey & Technology**

225.718.7103 | [jchustz@chustz.com](mailto:jchustz@chustz.com)

**Henry Schwartz | Director of Surveying**

985.219.1049 | [hschwartz@gisy.com](mailto:hschwartz@gisy.com)

### OFFICE LOCATIONS

#### LOUISIANA:

Abbeville | Baton Rouge | Broussard | Brusly | Cut Off | Fourchon  
Franklinton | Galliano | Houma | Lafitte | Larose | Napoleonville  
New Orleans | New Roads | Thibodaux | Youngsville

#### TEXAS:

Baird | Houston | Odessa



985.475.5238

[proposals@gisy.com](mailto:proposals@gisy.com)